



DORO

REAL ESTATE

2928 JERSEY AVENUE S
SAINT LOUIS PARK, MN 55426

A charming 1940s bungalow surrounded by parks, trails, shopping, and restaurants—with updates that make everyday living effortless.



- ♦ Offered at \$400,000
- ♦ Built in 1949



- ♦ 3 bedrooms
- ♦ 2 bathrooms
- ♦ 2-car detached garage



- ♦ 1,713 finished square feet
- ♦ 0.12-acre lot

LISTING AGENT

AARON ROSELL

aaron@dororealestate.com
651-705-6312

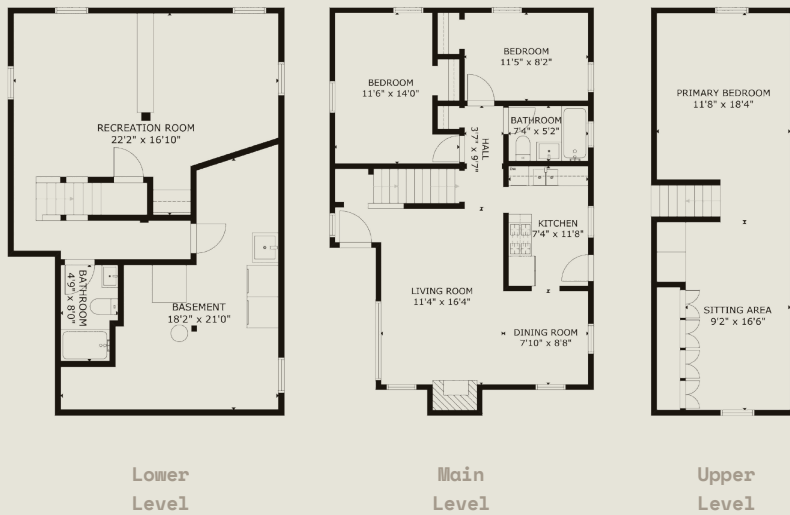
CO-LISTING AGENT

MIKE TRACY

mike@dororealestate.com
651-497-5904

kw KELLER WILLIAMS REALTY
INTEGRITY LAKES
Each Office Is Independently Owned and Operated





Character That Clicks.

A turnkey home in a standout Bronx Park location, where wonderful exterior landscaping meets classic Saint Louis Park architecture.

BEDROOMS: 3
BATHROOMS: 2
SQ. FT.: 1,713

Across from Bronx Park, oversized insulated garage, marble tile backsplash, original hardwood floors, updated roof, lush gardens, finished basement, rain barrels, paver patio, central A/C, vibrant location





Located directly across from Bronx Park and just steps from local favorites like Angel Food Bakery and the Cedar Lake Trail, this beautifully maintained 1949 bungalow blends vintage charm with everyday function in the heart of Saint Louis Park. Original hardwoods welcome you into the main floor, where a sun-splashed living room flows into a cozy dining nook and a stylish kitchen featuring butcher-block and quartz countertops, a gas range, and a marble tile backsplash with custom inlay. Two bedrooms and a full bathroom complete this level, perfect for guests or working from home. Upstairs, the half-story is devoted to a spacious primary bedroom with built-in drawers and generous closet space. The finished basement adds flexible living, a 3/4 bathroom, laundry, and a whimsical under-stair playroom that just might steal the show. Major updates include central A/C, a rebuilt chimney, newer roof, and an oversized, insulated two-car garage. Outside, enjoy an ever-changing, pollinator-friendly yard surrounding the home with texture and life. Lush gardens bloom all season long with rain barrels for sustainability, a paver patio, and rear alley access with extra parking. With parks, restaurants, and trails right outside your front door, this is Saint Louis Park at its most livable.





2928 JERSEY AVENUE S
SAINT LOUIS PARK, MN 55426

*These are the current utility providers, along with
estimated monthly averages as provided by the seller.*

	XCEL ENERGY \$90 per month	ELECTRICITY
	CENTERPOINT ENERGY \$65 per month	NATURAL GAS
	CITY OF ST. LOUIS PARK \$100 per month	WATER / SEWER TRASH / RECYCLING ORGANICS
	U.S. INTERNET \$65 per month	INTERNET

kw KELLERWILLIAMS REALTY
INTEGRITY LAKES
Each Office Is Independently Owned and Operated



2928 JERSEY AVENUE S
SAINT LOUIS PARK, MN 55426

VIRTUAL TOUR



Virtual Tour

For additional property details and a virtual 3D tour, please view NorthstarMLS single-family #6764213.

DORO

REAL ESTATE



Contact Us

LISTING AGENT

AARON ROSELL

aaron@dororealestate.com
651-705-6312

CO-LISTING AGENT

MIKE TRACY

mike@dororealestate.com
651-497-5904

kw KELLER WILLIAMS REALTY
INTEGRITY LAKES
Each Office is Independently Owned and Operated

